



CAPTIVE COMPONENT GLANDS

[www.ccgcablegland.com](http://www.ccgcablegland.com)



**VORTEX**  
INSPECTABLE INJECTION RESIN  
BARRIER GLAND

## The worlds first Injection Resin Barrier Gland

- Quick Setting
- Accurate and Instant Mixing
- Fills all Voids and Interstices
- 100% Flame and Gas Blocking
- For Unfilled Hygroscopic Cable
- Ex db I/ IIC, Ex eb I/ IIC,  
Ex ta IIIC, Ex nR IIC



**50**  
YEARS IN  
BUSINESS  
1972 - 2022

# PROBLEM

## Problems With Cable Construction

To comply with the installation codes of practice for hazardous areas, cable glands using elastomeric sealing rings should only be used on cables that are substantially round, compact with extruded bedding, and have non-hygroscopic fillers, such as Figure 1.



Figure 1

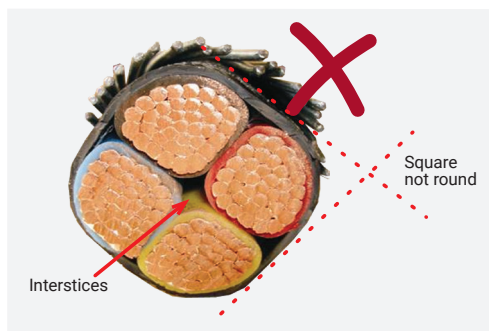


Figure 2

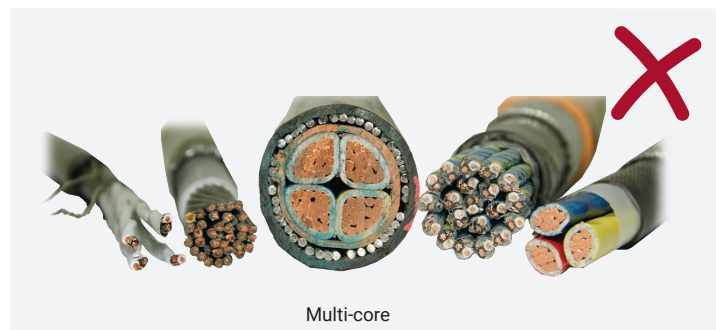


Figure 3

## When To Use Barrier Glands

### IEC 60079-14: Explosive atmospheres; Electrical Installation, Design, Selection and Erection

Prescribes the selection of electrical equipment in hazardous areas.

Knowledge of this Standard is imperative when selecting cables and cable glands for use in hazardous areas, and merely referring to the product certification is not enough.



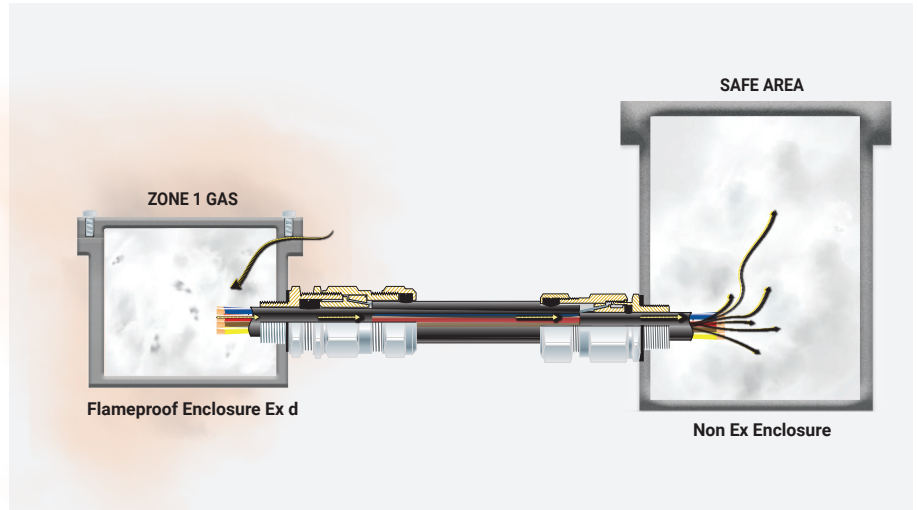
# Unfilled Multi Core Cables

## IEC 60079-14 Clause 9.3.2. States that:

Cables for fixed installations - shall be:

- a) sheathed with thermoplastic, thermosetting, or elastomeric material. They shall be circular and compact. Any bedding or sheath shall be extruded. Fillers, if any, shall be non-hygroscopic;

If cables do not pass one of these criteria and such cables link between a hazardous and a non-hazardous area the result may be flammable gas, liquid or vapour migration through the interstices of unfilled cables to the inside of; for example, control room or non-hazardous equipment. The situation is likely to be most acute with equipment installed in Zone 0 or Zone 1 locations (where the presence of a hazardous atmosphere has a greater likelihood and duration). If these conditions are likely to occur a barrier gland should be used.



## Ex d Equipment:

### IEC 60079-14 Clause 10.6.2

“requires the use of Barrier Glands for Ex d installations.”

Conventional flame-proof Ex d cable glands with seals are designed primarily to retain the explosive pressure within an Ex d enclosure and prevent the passage of hot gasses through the cable entry to the surrounding atmosphere. The design of such cable glands relies on elastomeric seals sealing around the bedding of the filled cable to perform this function.

It has been established that if cables are not effectively filled, substantially round, and are hygroscopic, hot gasses and the pressure produced by an explosion within an Ex d enclosure can bypass the protective elastomeric seals of a conventional Ex d gland. These hot gases can be forced down the interstices of unfilled cable, resulting in potential damage to the cable and/or non-Ex d equipment. The use of barrier glands effectively blocks these explosive gases from migrating down the interstices of unfilled cable.

## Barrier Glands are also required for the following equipment:

### Ex p

Pressurized Equipment may also necessitate the use of Barrier Glands.

Where necessary, to prevent a drop in pressure, the ingress of combustible gas or vapour by diffusion, or to prevent leakage of protective gas, wiring systems shall be sealed. If cables are not compact and filled, barrier glands should be used.

### Ex nR

## IEC 60079-14 Clause -10.8 states;

“The sealing of restricted-breathing enclosures shall be such as to maintain the restricted breathing properties of the enclosure. Where the cable used is not part of the certificate and/or instruction manual and is not effectively filled, it may be necessary to use a cable gland or other method (e.g. epoxy joint, shrinking tube) which seals around the individual conductors of the cable to prevent leakage from the enclosure”.

# Time Consuming Installation of Barrier Glands

For several years, installers in hazardous areas have been relying on barrier glands with a two-part epoxy-based putty as a way to stop explosive gases and liquids from diffusing down unfilled cables.

The problems with the two-part putty-based compound have always been the time taken to mix and then insert and pack the putty between the cable voids and into the barrier gland chamber.

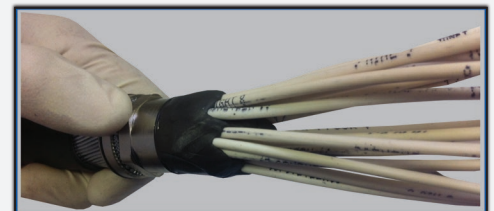
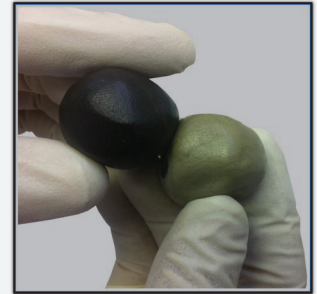
The mixing process, which can take several minutes depending on the amount of putty needed, has always been subjective because the putty is only truly combined when the two parts are hand-moulded into an "even colour."

The insertion of the putty between the individual cores of the multi-core cable is not only time-consuming, but there could be additional risks in that the putty may not have been inserted and packed correctly, which results in the potential for voids and gaps for gas or liquids to migrate through.

In addition, once the putty has been inserted between the cable cores and the barrier chamber, the time taken for the putty to harden can be up to several hours.

Barrier glands have always required unique skills from installers and extra attention from inspectors due to these premixing and installation issues.

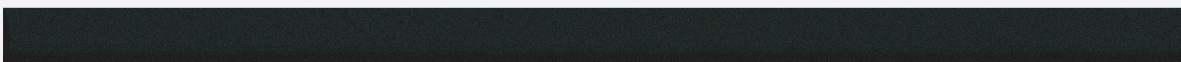
Recently, a two-part liquid pour resin system was re-introduced into the market that, whilst being effective in filling all the gaps and interstices in a cable, its two-part sachet mixing system does not adequately address the time taken and risks involved during the mixing process. The sachet mixing process is still very subjective and inaccurate, especially at varying temperatures, and can result in the resin setting either too quickly or not setting properly at all.



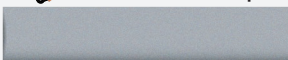
## CCG has an Accurate Quick and Safe Solution



2-Part Putty Barrier Compound: 2-3 Hours @ 30°C



Sachet Mix Liquid Pour Resin: 18 Minutes @ 30°C



CCG VORTEX® Injection Resin: 10 Minutes @ 30°C



Graphs compare the full time taken to install three different types of barrier glands

# SOLUTION

## CCG's VORTEX® Barrier Gland

CCG's VORTEX® Barrier Gland with an instant mixing, injecting resin has all but eliminated the hassles surrounding the preparation, mixing, and application of compounds/resins in Barrier Glands. The VORTEX® Injection Resin system is instantly and 100% accurately mixed whilst being simultaneously injected into the barrier gland in one single action. This reduces the installation time and gives increased confidence in the installation compared to the epoxy putty or sachet mix liquid pour resins.

The Injection resin flows into all the cable voids and interstices, completely filling the cable end. This forms a 100% barrier to any migration of explosive gases or fluids down the inside of an unfilled hygroscopic cable. VORTEX® barrier glands are tested and fully comply with the latest IEC Ex standards and installation codes of practice.

### Accurate, Instant Mixing and Application in One Single Action:

#### Ease Of Use

VORTEX® Injection Resin® is held in injection tubes and with a vortex mixing nozzle, it requires just **one hand to mix** and apply. Unlike a sachet, liquid resins require two hands to mix.

#### Instant Accurate Mixing and Simultaneous Injection

VORTEX® Injection Resin® is **instantly and accurately mixed** and then **simultaneously injected** through the vortex mixing nozzle in just one action, completely eliminating the time taken as well as the risks involved, which are prevalent when premixing other forms of resin.

#### 100% Safe And Effective

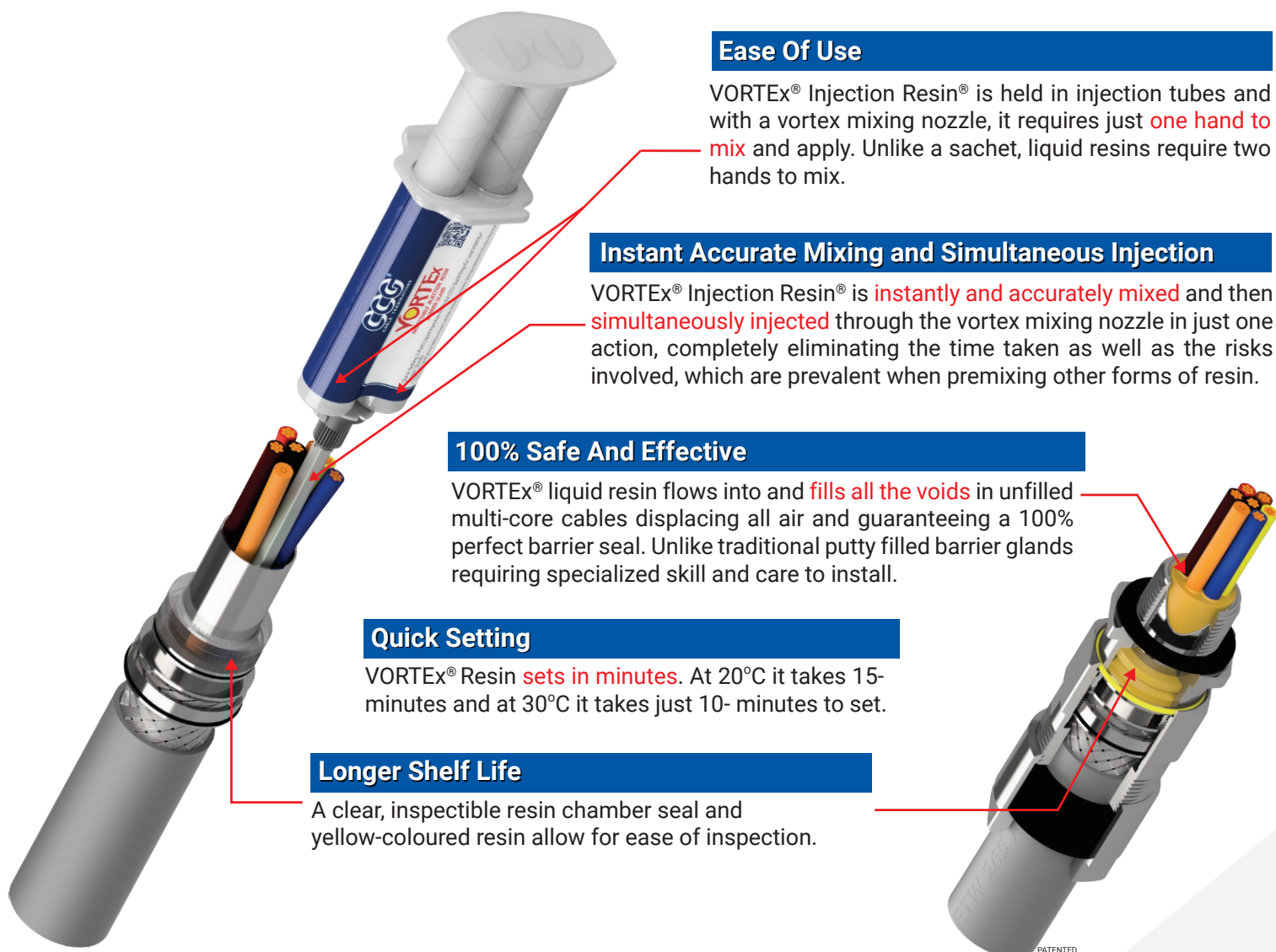
VORTEX® liquid resin flows into and **fills all the voids** in unfilled multi-core cables displacing all air and guaranteeing a 100% perfect barrier seal. Unlike traditional putty filled barrier glands requiring specialized skill and care to install.

#### Quick Setting

VORTEX® Resin **sets in minutes**. At 20°C it takes 15-minutes and at 30°C it takes just 10- minutes to set.

#### Longer Shelf Life

A clear, inspectible resin chamber seal and yellow-coloured resin allow for ease of inspection.



COMPARISON CRITERIA	Traditional 2-Part Epoxy Putty Compound		2-Part Sachet Mix Liquid Pour Resin		 INSPECTABLE INJECTION RESIN BARRIER GLAND	
Time to Mix	3-10 Minutes	✗	1-2 Minutes	✗	Instant	✓
Time to Apply	5-15 Minutes	✗	1-2 Minutes	✗	<1 Minute	✓
Time to Set 20°C	2-4 Hours	✗	30 Minutes	✗	15 Minutes	✓
Time to Set 30°C	2-3 Hours	✗	18 Minutes	✗	10 Minutes	✓
Mixing Method	Kneading and mixing with both hands until "even" colour. Subjective.	✗	Squeezing and mixing in a sachet with both hands until an "even" colour. Subjective.	✗	Instant mixing through the VORTEX® nozzle, requiring only 1 hand. Objective.	✓
Application Method	Manual firming and packing of putty compound. Requiring both hands.	✗	Rolling and squeezing of sachet. Requiring both hands.	✗	Direct injection. Requiring only 1 hand.	✓
Risk of not filling all interstices?	Yes	✗	No	✓	No	✓
Risk of not mixing correctly?	Yes, 30%	✗	Yes, 10%	✗	No, 0%	✓
Chance of Resin or Compound curing before application	Yes	✗	Yes	✗	No	✓
Shelf life at 30°C	1 Year	✓	3 Months (12 Hours if removed from foil)	✗	± 1½ Years	✓
Sensitive to moisture?	No	✓	Yes, Extremely – will react.	✗	No	✓
Contains Carcinogenic Toxins?	No	✓	Yes	✗	No	✓
Service Temperature of up to 95°C	Yes	✓	No - lower	✗	Yes	✓