

ANGLE BOX™

JUNCTION BOX - IP66/68

for General Industrial Electrical Installations

Features and Benefits

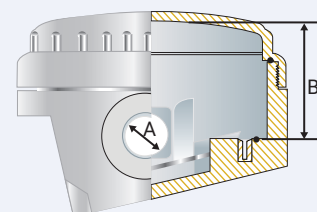
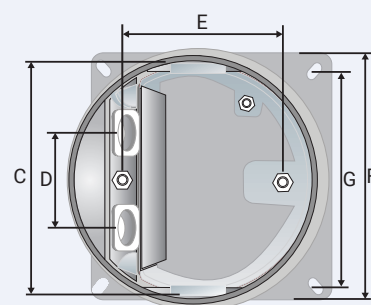
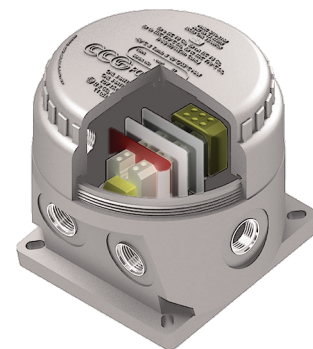
- Angle Box™ for industrial lighting applications.
- Screw-on lid provides ease of installation. Lid locking with a special key prevents unauthorized tampering.
- Supplied complete with safety securing lid lanyard.
- Angle Box™ is angled to allow ease of termination and inspection.
- Only approved CCG cable glands and Ex e terminals must be used.
- DIN Rail mounting studs are provided for use with terminal blocks.
- Dust and watertight to IP66/68, when fitted with CCG sealed cable glands.
- No drilling of the cable entries required. Internal earthing to all entries and rail.

Technical Data

| | |
|-----------------------|---|
| Type: | Angle Box™ |
| Box Material: | Impact corrosion and UV resistant glass reinforced polyester compound |
| Seal Material: | Low Temp. Nitrile Rubber |
| Inserts: | Brass, internal earth continuity ring and earth stud provided |
| Optional Accessories: | Certified Terminals, Box Spanner (Lid Locking Key) 4-Blanking plugs provided |

Standards and Certifications

| | | |
|-------------------------------|------------------------------|------------------------|
| Service Temperature: | -60°C to +110°C (Unfinished) | |
| Conformance: | Standard: | Certificate: |
| IEC/BS/EN | 62208:2011 | CML 17Y11251 |
| SANS | 62208:2012 | MASC 16-1787 |
| Impact Protection IK10 | IEC/BS/EN 62262 | CML 17Y11251 |
| IP66/68 - 2m Protection | IEC/BS/EN 60529 | CML 17Y11251 |
| | SANS 60529 | MASC 16-1787 |
| Deluge Protection | DTS 01 | CML 14CA370-1 |
| Marine Approval ABS | IEC 60529 | 25-0167226-PDA |
| Short Circuit Protection | IEC 60947-7-2, IEC 62444 | CATAPULT OR/15/11677_2 |
| Continuous Current Protection | IEC 60947-7-2 | CATAPULT OR/15/11677_2 |
| UV Protection | ISO 4892-2 | |
| Zero Halogen | BS7211, BS 50267-2-1 | TDW69-09-14 |
| Flammability | UL94V-0 | |
| London Underground Approval | IEC 62208, IEC 62262 | LU 3057 |



PATENTED



Conditions for safe use

- The CCG lid locking key must be used to open and close units that do not have locking screws such as "clear cover units".
- When fitted with the clear lid, the unit must be installed to prevent UV exposure to the internal components fitted.
- Only the terminal blocks as per the description may be utilised in the junction box. Specific installation conditions as set by the terminal manufacturer / terminal certification must be considered. This includes considering the use of the applicable partitions and end plates for terminal blocks, conductor installation, tightening down of terminal block screws etc.
- Terminal blocks may only be utilized on the applicable rail and must allow sufficient space to make connections and to close the cover / lid.
- IP66/68 glands / plugs must be used in the threaded entries.
- Information with relation to entries is indicated in the instructions.

| Product Code | Entry Thread 'A' | Internal Height 'B' | Internal Diameter 'C' | Mounting Centres 'D' | Rail Mounting Centres 'E' | Base Dimension 'F' | Overall Height 'G' |
|--------------|------------------|---------------------|-----------------------|----------------------|---------------------------|--------------------|--------------------|
| 065302-M20 | M20 | 80.0 | 123.0 | 51.0 | 76.0 | 121.0 | 102.0 |
| 065302-M25 | M25 | 80.0 | 123.0 | 51.0 | 76.0 | 121.0 | 102.0 |

All dimensions are in mm.

Any combination of 20mm or 25mm entry threads available.

CCG reserves the right to make alterations to the technical data, dimensions, designs and products available without notice. The illustrations cannot be considered binding. Please contact CCG for assistance.

ANGLEBox-JB090625

Wiring and Installation instructions for Angle Box™ without components

- Installation must be carried out by a competent person.
- The box must not be modified in any way, as this will invalidate the certification.
- Where cables enter the box they must be secured by CCG Cable Glands appropriate to the make up of the cable.
- Unused entry apertures must be blanked with certified CCG Blanking Plugs.
- To maintain IP 66/68 a thread seal gasket between the box and cable gland must be installed.
- Before replacing the lid, ensure the lid gasket is in place.
- The use of a CCG Box Spanner (Lid Locking Key) is required to maintain the tamper proof integrity of the box, refer Figure 1.

Wiring and Installation instructions for Angle Box™ with components

- Installation must be carried out by a competent person.
- Do not install under live current conditions.
- The box must not be modified in any way, as this will invalidate the certification.
- All wiring must be carried out in accordance with the relevant Codes of Practice.
- The wiring insulation must not extend by more than 1.0mm from the metal face of the terminal as shown in Figure 2.
- The voltage and current value of the box must not be exceeded.
See relevant certificate for current limitations for conditions of use / schedule of limitations.
- Only those terminals shown in the terminal schedule may be incorporated in the box, refer Table 1.
- Inner cable bedding must protrude into the box by a minimum of 20mm past the cable entry point.
- Not more than one single or multiple strand lead shall be connected into either side of the terminals.
- Only earth conductors of equal size shall be connected with rail mounted terminals.
- All terminal screws used and unused shall be tightened.
- A parallel shaft screw driver of the correct size should be used for rail mounted terminals screws.
- Where cables enter the box they must be secured by CCG Cable Glands appropriate to the make up of the cable.
- Unused entry apertures must be blanked with certified CCG Blanking Plugs.
- To maintain IP66/68 a thread seal gasket between the box and cable gland must be installed.
- Before replacing the lid, ensure the lid gasket is in place.
- The use of a CCG Box Spanner (Lid Locking Key) is required to maintain the tamper proof integrity of the box, refer Figure 1.

FIGURE 1

To ensure the box apparatus is tamper proof: Screw on, tighten and lock lid in place by means of a CCG Box Spanner (Lid Locking Key).



CCG Box Spanner
Adaptor Lid Locking Key



CCG Box Lid



CCG Box Base

CCG Box Spanner

| Product Code | Box Size |
|--------------|----------|
| 401202 | M25 |

TABLE 1

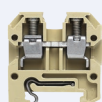
| Box Type | Box Size | Terminal Type and Size | Max Quantity | Rail Size |
|-----------|----------|--------------------------------|--------------|-----------|
| Angle Box | 2 | 2.5mm ² | 12 | 35 |
| Angle Box | 2 | 4mm ² mini terminal | 10 | 15 |
| Angle Box | 2 | 4mm ² | 10 | 35 |
| Angle Box | 2 | 6mm ² | 8 | 35 |
| Angle Box | 2 | 10mm ² | 7 | 35 |
| Angle Box | 2 | 16mm ² | 6 | 35 |
| Angle Box | 2 | 35mm ² | 3 | 35 |

VOLTAGE PER TERMINAL CONFIGURATION

| Terminals | Volt | Earth Terminals |
|-----------|------|-----------------|
| AKZ 4 | 275V | AKE 4 |
| WDU 2.5 | 550V | WPE 2.5 |
| WDU 4 | 550V | WPE 4 |
| WDU 6 | 550V | WPE 6 |
| WDU 10 | 550V | WPE 10 |
| WDU 16 | 550V | WPE 16 |
| WDU 35 | 550V | WPE 35 |



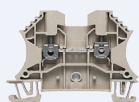
TS 15 Mini Rail



Mini Terminals for
conductor
sizes 0.5 to 4mm²



TS 35 Top Hat Rail



Terminals for conductor
sizes 0.5 to 70mm²

FIGURE 2

The wiring insulation must not extend by more than 1.0mm from the metal face of the terminal as shown below.

